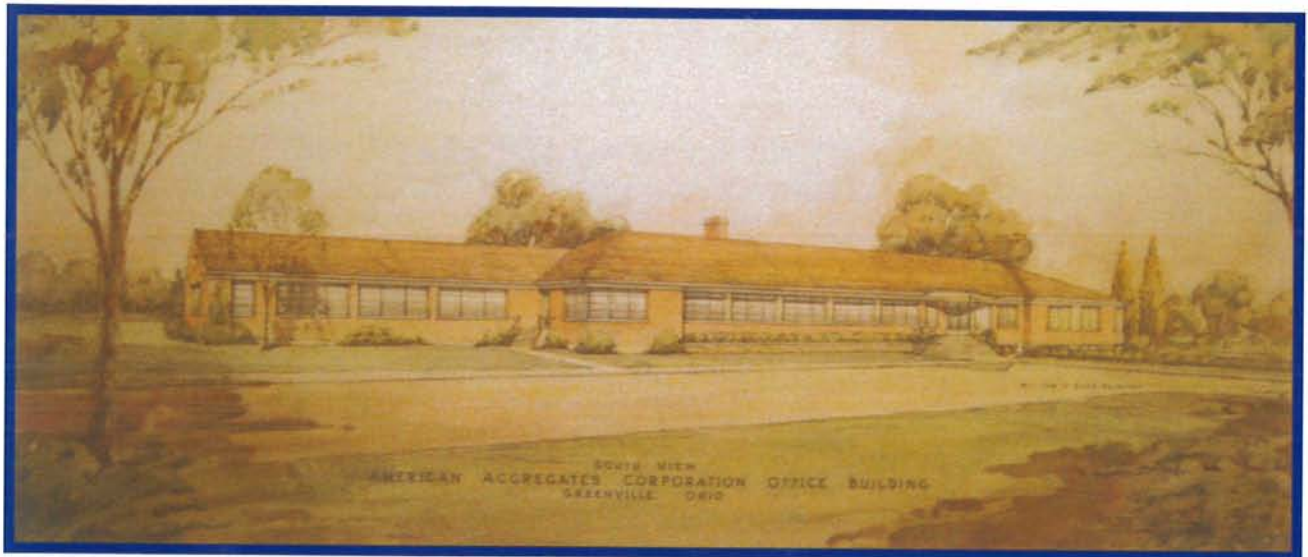


# LOCAL HEALTH SERVICES

## 2012

## Annual Report

## *Darke County*



## *General Health District*

T.L. Holman, DVM, RS, Health Commissioner

300 Garst Avenue • Greenville, OH 45331

Phone: 937-548-4196 • Fax: 937-548-9128

Web Site: [www.darkecountyhealth.org](http://www.darkecountyhealth.org)



To: Director of Health, Ohio Department of Health  
Township Trustees of Darke County  
Mayors of Existing Municipalities  
Greenville City Council and other Councilman  
Darke County Commissioners

This 2012 annual report is just a summation of the work & the accomplishments of the Darke County General Health District staff. The success of the Darke County General Health District comes from the dedication and hard work of our staff and the Board of Health and the support of County and Township Officials. As you browse through this report we hope that you continue to be supportive of all the work that the staff and Board have accomplished. Please feel free to visit our website at: [www.darkecountyhealth.org](http://www.darkecountyhealth.org)

Our goals are to insure healthy neighborhoods, workplaces and homes, safe food and water, clean air, and a healthy environment. Our commitment and efforts to provide the best health protection and quality services to the residents and environment of Darke County remains our priority.

I wish to express my gratitude to the staff for their excellent work, to the Darke County Board of Health for their interest and guidance in the community, the District Advisory Council, Greenville City, County Offices in the Courthouse, Community Partners and to the Citizens of Darke County for their continued support.

Sincerely,

*T. L. Holman D.V.M. R.S.*

T. L. Holman, DVM. RS  
Health Commissioner

## TABLE OF CONTENTS

Mission Statement

Board of Health

Advisory Council

Public Health Infrastructure Report

Community Health Nursing Services

Help Me Grow

School Health

Immunization & Communicable Diseases

Collaborations

Maternal and Child Health

Bureau for Children with Medical Handicaps

Preceptor-ships

AIDS Case Management

Community Health Assessment

Fame

Lead Program

Vital Statistics

Number of Births and Deaths

Causes of Death

Death by Age Group

Number of Permits/Certificates Issues

Environmental Services

Staff

Programs

Additional Duties

Other Accomplishments

Statistics

Financial Reports

## ***MISSION STATEMENT***

The mission of the Darke County General Health District is to develop and maintain an efficient and effective system, which will provide for the highest quality of public health services, and to promote and protect the Darke County Community's physical, mental, social, and environmental well being.

### **The Darke County General Health District will administer its responsibilities by:**

- Assessing the health and environmental status, resources, and needs of the community.
- Develop the necessary programs to monitor and control the environmental factors that could negatively impact on the health and quality of life in the community.
- Develop the necessary programs to provide health promotion and educational services that motivate groups and individuals to improve and maintain optimal health and environmental status.
- Provide preventive health and environmental services as necessary.
- Monitor the effectiveness of the departments programs and of the Community's efforts to effectively control the health and environmental problems and to maintain optimal health and environmental well being.

## ***DARKE COUNTY GENERAL HEALTH DISTRICT BOARD OF HEALTH***

The Board of Health is responsible for appointing the Health Commissioner. They approve the hiring of Health Department employees, and meet monthly to discuss topics that are occurring within the Health District. They help make important decisions such as the adoption of regulations and policies and approval of expenditures. At least one member must be a physician. The current members include:

Robert Turner, Chairman	Term Expires March 2014
James Henby, Vice-Chairman	Term Expires March 2013
Krista Fourman	Term Expires March 2017
Wayne Deschambeau	Term Expires March 2016
Dr. Margaret Hensel	Term Expires March 2015

## ***DISTRICT ADVISORY COUNCIL***

The Darke County General Health District is a combined health district representing Greenville City and the Darke County Community. There are five individuals appointed to the Board of Health. The Mayor of Greenville City appoints 2 members of the Board of Health to represent Greenville City. The District Advisory Council appoints 2 members of the Board of Health to represent Darke County and they elect a five member advisory council of regulated parties that selects an additional member from their group. The District Advisory Council includes the Township Trustees and the Mayors of the Villages within Darke County. The District Advisory Council includes Trustees from the following townships: Adams, Allen, Brown, Butler, Franklin,

Greenville, Harrison, Jackson, Liberty, Mississinawa, Monroe, Neave, Patterson, Richland, Twin, Van Buren, Wabash, Washington, Wayne, and York. The District Advisory Council includes Mayors from the following villages: Ansonia, Arcanum, Bradford, Burkettsville, Castine, Gettysburg, Gordon, Hollansburg, Ithaca, New Madison, New Weston, North Star, Osgood, Palestine, Pittsburg, Rossburg, Union City, Versailles, Wayne Lakes, and Yorkshire. The Council membership also includes a County Commissioner.

***2012 DISTRICT ADVISORY COUNCIL***

TRUSTEES

Donald Lecklider  
 Paul Mestermaker  
 Edward G. Huff Jr.  
 Mark Loxley  
 Terry Warner  
 Ron Klosterman  
 Donald Drew  
 Richard Brooks  
 Mike Foreman  
 Roger Fortkamp  
 Kevin McKibben  
 Walter Wiant  
 Steven Puthoff  
 Ted Mangen  
 Mike Fout  
 Jed Smith  
 Larry Bubeck  
 William Hart  
 DennyMestemaker  
 Bill Barga  
 Co. Comm. – Michael Rhoades

MAYORS

Gerald A. Koverman  
 Judith F. Foureman  
 Jeffrey L. Wirrig  
 Joe Stammen  
 Mary E. Brown  
 Jason D. Lance  
 John A. Gross  
 Dana Heck  
 David H. Peterson  
 Ray Sanders  
 Brad Birt  
 Cory Griesdorn  
 Steven Winner  
 David A. Brewer  
 Anthony Spires  
 Danny Howe  
 Scott Stahl  
 Jeffrey Subler  
 Gary Lee Young  
 Mark Gehle  
 Michael C Bowers, City

***2011-2012 Public Health Emergency Preparedness (PHEP)***

The Public Health Infrastructure is responsible for protecting Darke County’s health and safety, providing credible information for better health decisions, and promoting good health through a network of partnerships. It is made up of the work force, information and data systems, and the state and local public health organizations across the country.

In the last 100 years, public health has increased life expectancy by 30 years through vaccinations, control of infectious disease, improved sanitation and many other activities. Today, this infrastructure lacks the capacity to respond quickly to public health threats. Whether it is the spread of the West Nile virus into new areas of the United States, an outbreak of E.coli 0157:H7, or a bioterrorism attack involving anthrax at an airport; the public health system has struggled to keep pace with these increasing demands.

The Public Health Emergency Preparedness Grant (PHEP) for Bioterrorism (previously the PHIG) completed its tenth fiscal year in August of 2012. The grant provides funding for a wide range of public health initiatives, which are used to combat threats to public health. The grant provides the Darke County Health Department with funds to prepare for public health emergencies, which includes acts of bioterrorism. Emphasis is put on improving communication



between the Darke County Health Department and key players in our West Central Ohio (eight county) Region to develop, exercise, and implement Darke County's response plans and protocols. The program emphasizes the coordination of activities, a clear outline of responsibilities, and sharing of assets among hospitals, emergency management services, health care providers, state, local, and regional public health agencies, federal partners and others to prepare for and provide an effective response to public health emergencies. The funding also allows state and local health departments to hire and train personnel, as well as obtain equipment and other resources. The grant is categorized into target areas to improve capacity in planning. These areas include: epidemiology, laboratory, education & training, public risk communication & information dissemination, and expansion of current infrastructure, including the Health Alert Network. Some of the programs instituted allow for the following:

1. Integration of local, state, and regional public health and hospital preparedness and response capacity.
2. Initiating planning activities at the local level with a particular emphasis on creating local and regional plans that will link the efforts of hospitals, local health, physicians, nurses, emergency medical personnel and others.
3. Adding state capacity to provide critical centralized support services including laboratory analysis and development and maintenance of a statewide information technology system that will support the transmission of critical data at all times.
4. Establishing regional coordination of public health and hospital planning and response activities.
5. Creating the State Pandemic Flu Response Plan and implementing the vaccination clinics in compliance with the National Pandemic Vaccination Program.
6. Established a core group of hospital and public health personnel vaccinated against smallpox who are now ready to respond to a smallpox outbreak.

For additional information on preparedness or grant information, feel free to visit the Center for Disease Control's website at <http://www.bt.cdc.gov/>.

Dr. T.L. Holman, DVM, RS, Health Commissioner, heads the department of Emergency Preparedness for the Darke County General Health District. He is responsible for overseeing the grant and supervising the activities associated with the program.

Dennis Wein, RN, BSN, MPH is the Emergency Response Coordinator and is responsible for carrying out the activities associated with the PHER Grant. He also is the Communicable Disease, & Tuberculosis Nurse, as well as the local Epidemiologist, which makes him responsible for investigating and reporting all mandated communicable diseases to the state of Ohio. Additionally, he is the advisor for the Darke County Unit of the Medical Reserve Corps.

#### **Summary of the 2011-2012 Grant Year**

#### **Meetings attended by the emergency Response Coordinator and members of the Bioterrorism Preparedness Team of the Darke County Health Department:**

Darke County LEPC meetings (quarterly)  
Regional Epidemiology meetings (quarterly)  
Medical Reserve Corps Coordinator meetings (monthly)  
School Nurse Meetings (monthly - during academic year)  
Regional Infectious Disease Surveillance Meetings (quarterly)  
Regional Emergency Response Coordinator meetings (quarterly)

Regional Metropolitan Response System meetings (quarterly)  
Ohio Department of Health *Investigation of Foodborne Disease Outbreaks* Training  
Public Health OSU Summer Institute - Epidemiology Certification Completed  
Incident Action Planning During Public Health Emergencies  
Red Cross Instructor Training Certification  
FEMA Course *Developing & Maintaining Local EOPs*

**Training provided to the health department staff by the Bioterrorism team:**

Bioterrorism Tabletop Drills & Exercises for the Health Department Staff: Regional Drill, Local POD Training, April Tdap Clinic  
Incident Command Training: ICS-100, ICS-200, NIMS-700  
Monthly Staff In-Service (topics): BBP, TB In-Service, CPR, First Aid, HIPAA Law, MARCS Radio In-Service, Planet Lead, & Healthy Homes.

**Education provided for the county/community by the Emergency Response Coordinator /Infectious Disease Coordinator:**

Health Department Staff are 100% National Information Management System (NIMS) Compliant  
Communication/IT Exercise with all Darke County Schools  
Emergency Preparedness Trainings via the MRC setting for Darke County School Nurses.  
Communicable Disease Trainings provided for several Child Care Centers in Darke County

**Pharmaceutical Cache:** The Darke County Unified Pharmacy Plans are continually in place and updated. All area pharmacists have signed the Memorandum of Understanding. While waiting for the Strategic National Stockpile to arrive, this plan ensures that hospital pharmacies as well as other retail pharmacies in the county will have the drugs and supplies they need to adequately meet the increased demand brought about by a terrorist incident.

**Ohio Disease Reporting System (ODRS):** This system can be used 24 hours a day, 7 days a week, 365 days a year (24/7/365) to report communicable diseases to the state. Our local Epidemiologist/Infectious Disease Nurse, Dennis Wein, enters all required disease data and monitors for new cases on a daily basis via this statewide system.

**National Outbreak Reporting System (NORS):** During the year 2012, the Darke County General Health District became enrolled in NORS. This enteric disease reporting system is supported by the CDC and assists in investigations of disease outbreaks.

**Communications & Information Technology/Ohio Public Health Communication System (OPHCS) Alerts:** This addresses state efforts to provide information technology that will allow public health partners to exchange information and data quickly and securely. This system ensures effective communications between state and local public health agencies, hospitals, and emergency management. The health department provides 24/7/365 connectivity and communication between key players/stakeholders through cell phones, pagers, T1 continuous Internet connections, and telephone system. As of September 2010, under the requirements of the PHEP Grant, the Darke County LHD now issues a monthly OPHCS Alert to a select roster of LHD employees. The health department has in-house **MARCS** radios, which operates with 800-mhz capabilities.

**OPHAN:** As of 2011, the Darke County Health Department became connected into the Ohio Department of Health *Ohio Public Health Analysis Network*. This statewide electronic system

tracks POD sites within every Ohio county and has a GIS function to calculate various points of interest about population demographics.

The Darke County Health Department disseminates information to the public quickly through the Health Departments website at [www.darkecountyhealth.org](http://www.darkecountyhealth.org). In December of 2010, the Health Department added social media as a tool to reach the public and is now on Facebook and Twitter. The goal is to eventually coordinate these social media sites with our emergency preparedness partners to disseminate common, consistent messages in the event of an emergency.

**Other:** The Emergency Response Coordinator has also been actively part of the following community groups during 2012: Darke County Alzheimer's Committee, Darke County Tri-Council, Area Agency on Aging PSA-2, Darke County Red Cross Functional Needs Assessment Committee, and the Darke County Hazard Mitigation Committee.

**Conclusion:** A high level of dedication and cooperation between state, local public health, and hospital staff, along with many other partners made it possible to meet this level of productivity in the tenth fiscal grant period. In the upcoming grant year, we face the challenge of integrating public health with community awareness and individual responsibility in addition to maintaining our current relationships with hospitals, local health departments, pharmacists, and mass clinic sights. We plan to prepare in order to protect the citizens of Darke County during any public health emergency, including those resulting from an act of terrorism. We will build on the work we have begun in the previous years as well as implement new activities that bring us closer to a better-prepared Darke County, Ohio.

### ***Community Health Nursing Services***

The Community Health Nursing Services Division (CHND) of the Darke County Health Department provides public health services and educational programming for the citizens of Darke County. Jennifer Barga RN, BSN is the Help Me Grow Project Director and the Director of the Community Health Nursing Services. She is responsible for all nursing activities. Dennis Wein, RN, BSN, MPH is the Emergency Response Coordinator, Infection Control Coordinator, and Tuberculosis Control Nurse, & Epidemiologist. Nicole Lefeld, RN is the Coordinator for the Bureau for Children with Medical Handicaps and Help Me Grow Service Coordinator, Danell Warner, RN is Immunization Project Nurse and Newborn Home Visiting Nurse. Kari Shuttleworth, RN is a HMG Service Coordinator and Nurse for the Bureau for children with Medical Handicaps. Michelle Mader is the Nursing Division Secretary who supports all of the above programming. Jody Hocker also provides secretarial support to the nursing division as needed.

The CHNS of the Darke County Health Department meets the communities health needs with various programs. These are as follows:

The Darke County Health Department in collaboration with Anthony Wayne Early Childhood, has implemented "**Help Me Grow**" a comprehensive service program for Darke County pregnant women and children from birth to 3 years of age. The goal of Help Me Grow is to assure that newborns, infants, and toddlers across Darke County have the best possible start in life. Through this state integrated program, funding is provided from the state general revenue funds and federal part C dollars to provide the following services:

- Provide home visits to assess the health of newborns and to help new parents by providing information on child development and community programs and resources;
- Provide early identification of children with developmental delays and information through screenings and evaluations.



- Promote family literacy and support parents as full partners in their child's education.

### ***On-Going***

Ongoing services are provided to support an expectant first time parent, any child identified through children's protective services, or any first time parent whose baby is less than 6 months of age. To be eligible the client must fall @ or below 200% of the federal poverty level.

### ***Early Intervention***

The Early Intervention program is a system of providers who work together to provide early identification and family-centered services to infants and toddlers with developmental delays or disabilities. The Early Intervention program also ensures children receive appropriate medical care and therapies, encourages parents to utilize community resources and services, and assists them with understanding the present and future needs of their children.

After the initial screening, if services are indicated referrals are made to Anthony Wayne Early Childhood. To schedule an appointment for a home visit or to ask questions about infant or toddler health, the dedicated phone line for "Help Me Grow" is **547-9392**. This is a 24-hour phone number, answered between 8:00 am and 4:00 pm. A message may be left on the answering machine after hours.

### ***Statistics for January to December 2012***

#### Home Visits

On-Going	103
Early Intervention	759
Prenatal	30

### ***School Health***

All Darke County school nurses and the health department infectious disease nurse meet monthly throughout the academic year at the Health Department to discuss school child health issues. These meetings provide in-services on issues pertinent to children from kindergarten through high school. The health department supports the Darke County School Nurses in their efforts to: implement the mandated health screening programs, manage the school's medication administration program, prevent the spread of communicable disease by assuring immunization law compliance of all students, provide care for the school district's ill and injured students, coordination of health service and education efforts with teachers, athletic directors, health educators, food service personnel, and collaboration with the community health care providers.

### ***Immunization & Communicable Diseases***

The immunization program continues to serve a large portion of the Darke County population. Clinics are held on Tuesdays from 8-10:30 am and 2-5:00 p.m. The CHNS Division continues to encourage all parents to have their children fully immunized by two years of age. Immunization statistics vary for specific vaccines from year to year due to the rapidly changing immunization combinations, introduction of new vaccines, and immunization practice changes.

#### ***Immunization summary***

DtaP	212	Kinrix	78	Yellow Fever	8
Tdap	706	Polio	139	Typhoid	33
MMR I	124	Pentacel	128	Twinrix	50
MMR II	134	Rotavirus	38	MMR adult	13
Menactra	128	Hep B child	151	Hib	221

Hep B adult	98	Hep A child	284	TB tests	471
Hep A adult	57	Gardasil	120	Varicella Adult	19
Varicella Child	330	Pneumovax	9	Zostavax	115
Prevnar	282	Flu	1213	Pediarix	30
Td	21				

Total Vaccines- (excluding flu) 3999  
 Clinic Attendance (Excluding flu clinics) 1677

Total Clinics held Days-50  
 Evenings- 50

### ***Communicable Disease Report***

Class A Diseases:	Campylobacteriosis	20	Influenza A & B (hospitalized)	13
	Chlamydia	125	Legionellosis	3
	Cryptosporidium	6	Meningitis, aseptic/viral	3
	E.coli enterohemorrhagic	3	Mycobacterium, non-TB	3
	Giardiasis	2	Pertussis	2
	Gonorrhea	2	Salmonella	19
	Hepatitis A	1	Streptococcal pneumoniae	7
	Hepatitis B, acute	8	Varicella	17
	Hepatitis C, chronic	35	West Nile Virus	4
	Influenza A (novel)	1		
Total Class Cases: 274				

### ***Collaborations***

During 2012, the CHNS Division participated in collaborative efforts throughout the community to promote the health of Darke County residents. Nurses served on the following committees:

Darke County Mental Health	County's School Nurses
Intersystem Diversion Family Team	Darke County Red Cross
Early Childhood Coordinating Committee	FAME (Financial Assistance & Medical Emergencies)
Miami Valley Health Improvement Council	Local Nursing Home meetings
Family and Children First Initiative	CORSP
Domestic Violence Coalition	
Darke County Tri Council	

### ***Maternal & Child Health***

In 2012, the Darke County Health Department participated with Ohio Department of Health's annual inspection of Wayne Hospital's Obstetrical Unit. The Obstetrical Unit was found to be in compliance and the unit was licensed for 2011/2012.

Visits were made by referral for children considered high risk for health problems, abuse, and/or neglect. The Health Department continued to cooperate with the Children's Service Division of the Job and Family Services for consultation and joint visits. Active participation in the

Intersystem Diversion Team (IDT) and Family Team Meetings involved attending case conferences for high-risk children and their parents.

***Bureau For Children With Medical Handicaps***

The Bureau for Children with Medical Handicaps (BCMh) is funded from the combined resources of federal, state, and county governments. Services are available to residents of Ohio, under the age of 21, who are under the care of, or referred to, a BCMh provider physician. BCMh will cover all costs to the family during the testing (diagnostic program) of a child for a medical condition through BCMh providers regardless of family income. Once diagnosed, BCMh will pay for all medical expenses (treatment program) not covered by insurance or Medicaid if the family qualifies.

Total active clients	231
Total unduplicated contacts	200

<b>Programs:</b>	Treatment	168
	Diagnostic	62

***Preceptor-ships***

Edison State Community College Nursing Students, Wright State University, Indiana University and Ball State University utilized the Darke County Health Department as a clinical site for maternal child health nursing and community health assessment.

***AIDS Case Management***

The CHNS Division in collaboration with the Ohio Department of Health HIV CARE Services Section and the Miami Valley Ryan White Consortium # 4 provide services to those requesting testing for HIV as well as those who are HIV positive and require case management. This consortium provides education within the community on AIDS prevention and understanding about the disease process. There were 14 clients served in Darke County for 2012. This represents 1.5% of the 925 clients enrolled in the AIDS Resource Center Ohio, which encompasses 6 counties surrounding Montgomery County. The grant which funded these services out of the AIDS Resource Center of Dayton was greatly downsized at the end of 2011. The result of this reduction was the stoppage of testing services in Darke County in December. Services will continue to be available for Darke County residents who can travel to the Dayton office.

***Financial Assistance for Medical Emergencies (F.A.M.E.)***

F.A.M.E. is a local non-profit organization funded by Darke County United Way and community donations, to assist persons who need emergency medical assistance or do not qualify for any other funding source. All requests are approved by the Nursing Staff on a rotating basis. F.A.M.E. responsibilities are shared with Family Health Social Services.

**FAME**  
**Darke County Health Department - 2012**

Month	Unfunded	Funded	Average/Patient	Total Patients	New FAME	Repeat Patients	Encounters	Denied
January	\$220.00	\$1,808.86	\$78.65	23	18	5	26	16
February	\$30.00	\$873.45	\$54.59	16	14	2	20	9
March	\$134.82	\$1,176.10	\$78.41	15	10	5	24	9
April	\$193.42	\$1,451.51	\$76.40	19	12	7	27	8

May	\$0.00	\$728.99	\$121.50	6	3	3	25	9
June	\$73.35	\$739.26	\$46.20	16	10	6	26	1
July	\$102.92	\$1594.86	\$94.32	18	15	3	41	13
August	\$0.00	\$413.57	\$82.71	5	5	0	19	6
September	\$261.06	\$1,135.50	\$94.62	12	10	2	30	9
October	\$0.00	\$909.08	\$60.61	15	11	4	23	10
November	\$0.00	\$885.67	\$60.50	14	8	6	21	6
December	\$0.00	\$118.68	\$39.56	3	1	2	5	7
<b>YTD Totals</b>	<b>\$1,015.57</b>	<b>\$11,835.53</b>	<b>\$888.07</b>	<b>162</b>	<b>117</b>	<b>72</b>	<b>287</b>	<b>103</b>

### ***Lead Program***

Lead poisoning is the most common and preventable environmental disease affecting one out of every six preschool children. The State of Ohio mandates testing of the at risk population and requires property be made safe. (Substitute House Bill 248)

### **2012 VITAL STATISTICS REPORT**

***Registrar: Terrence L. Holman, DVM***

***Deputy Registrar: Connie Shiverdecker***

The Darke County Health Department Division of Vital Statistics records birth and death certificates for individuals who were either born or died in Darke County. The Birth and Death Records begin December 20, 1908 to the present date. The vital statistic office collects and reports statistics for the county. This information is used to determine trends in causes of death, health assessment, receiving funding in various forms, and genealogical purposes.

The Vital Statistics division and the Ohio Department of Health have implemented the Integrated Perinatal Health Information System and Electronic Death Registration System that allows birth and death certificates to be filed electronically.

Anyone wishing to deliver their baby at home must contact the vital statistics department and complete the proper forms to register their child.

The division also maintains Certificates of Service for people who have died in another state but are buried in Darke County.

On January 1<sup>st</sup>, 2011, the State of Ohio made it possible for us to better serve our customers using statewide issuance. The Darke County Health Department is now approved to issue birth certificates for individuals born in the state of Ohio. In the past, the customer had to go to the county in which the birth occurred. It was voluntary for health departments to participate in this program; therefore, not all health departments may have statewide issuance. Also, the Health Department received training and had to pass a test in order to be approved for this new program.

### **BIRTH AND DEATH STATISTICS**

BIRTHS	315	MALE	168	FEMALE	147
DEATHS	419	MALE	222	FEMALE	197
STILLBIRTHS	1	SETS OF TWINS	0	HOME BIRTHS	16



### **CAUSE OF DEATHS**

Infectious & Parasitic Disease	7	Disease of the Genitourinary System	12
Disease of Immunity Disorder	5	Auto Accident	10
Neoplasm	66	Suicide	0
Disease of the Circulatory System	134	Disease of the Respiratory System	45
Other Causes of Death	99	Disease of the Nervous System & Sense Organs	30
Disease of the Digestive System	4	Other Accidents	1
Mental Disorders	6	Homicide Pending	0

### **DEATH BY AGE GROUP**

Under 1 Year	0	25 – 44 Years	17
1 – 4 Years	0	45 – 64 Years	73
5 – 14 Years	0	65+ Years	322
15 – 24 Years	7		
Number of Burial Permits Issued (Local & Out of County)			435
Number of Affidavits Filed		(Birth) 4 (Death) 22	26
Number of Certificates of Service Filed			18
Number of Stillbirth Certificates Filed			1
Number of Certified Copies – Birth Certificates			1431
Number of Certified Copies – Death Certificates			1610

### **Environmental Services**

The Environmental Division of the Darke County Health Department is responsible for many programs. The department aims to provide services that will protect the environment and improve the environmental factors that affect the health of the citizens of the Darke County Community. In 2012, the Environmental Division continued to be successful in keeping its state mandated programs on the state approved list.

### **Environmental Staff**

Roberta Mangen, RS, MPH, Director of Environmental Health  
Marilyn T. Holman, RS – Administrative Assistant  
Elizabeth Farver, RS, MS, GISP – Registered Sanitarian  
Corrie Holthaus, RS- Registered Sanitarian  
Sophie O'Connor, RS – Registered Sanitarian  
Janel Hodges, RS – Registered Sanitarian  
Lance Begoon, CPI – Certified Plumbing Inspector (resigned)

Joe Nugent, Plumbing Inspector  
Bill Brown, CPI – Certified Plumbing Inspector  
Connie Shiverdecker – Clerical  
Teresa Plessinger – Environmental Secretary

\*Marked below with an asterisk are those programs, which were surveyed and approved by the Ohio Department of Health, the Ohio Department of Agriculture, and/or the Ohio Environmental Protection Agency.

### **Environmental Programs:**

**\*Private Water Systems:** provides services to protect the health and well being of individuals from consuming unsafe water and to protect the ground water supply. This program includes the permitting of wells drilled either for agriculture or for a residence. The well must meet certain distance requirements and installation requirements in order to protect the ground water and ensure a safe drinking water supply. This program includes the GPS mapping of existing and new well installations.

*New Installation Permits Issued- 76      Alteration Permits Issued- 13      Sealing Permits-3*

*Inspections- 179      Consultations-257*

**Water Testing:** provides water testing services to protect the health and well being of individuals from consuming unsafe water. It may include testing the water to see if it is the source of illness, a cause of concern, or in conjunction with the special service sewage program, human service daycare program, food service, or the well permit program. When contaminants are found, it includes the investigation of the well, possible upgrade of the water system, and/ or education materials provided to the users of the water system.

*Satisfactory Bacteria- 190*

*Un-safe Bacteria- 47*

*Other samples- 7*

*Un-safe E-coli-4*

**\*Home Sewage Treatment Systems:** provides services to protect the community and the environment from disease or nuisances resulting from improper or inadequately treated sewage. This program includes the permitting and inspection of all new home sewage treatment systems prior to operation, the investigation of reported malfunctioning septic systems and their subsequent repair or upgrade, the keeping of records regarding the septic systems, the GPS mapping of septic systems, the registration of septic system installers, haulers, and service providers. The program provides educational materials to the public on their systems and how to properly maintain them.

**\*Sewage Operational & Maintenance Program:** This program includes the operational permitting and inspection of existing sewage systems. It ensures the systems are working in accordance with their permits and provides information to the homeowner on how to maintain their system.

**Special Service Sewage & Well Inspections:** provides services to homeowners when selling/purchasing a home or subdividing acreage from a home to ensure the septic systems are functioning and treating the septic waste, and there is adequate room for replacement of the septic system. It also helps to ensure a water supply that meets water quality standards for the residents of the property.

**\*Site Review:** The Health Department reviews applications for building homes on parcels of land. Lots are reviewed for septic system and well placement. This review helps address potential problems with proposed building sites.

**Subdivision & Plat Review:** as part of the Review Board, the Health Department reviews those parcels of land to be split that are 20 acres or less. The Health Department along with other agencies addresses potential concerns with proposed building sites before they become a problem. They also review existing home sites that are to be sub-divided from larger parcels of land to ensure that the septic system is approved and there is adequate room for septic system replacement.

**Home Sewage Treatment System Statistics:**

<i>New Installation permits issued- 24</i>	<i>Installers registered-30</i>
<i>Replacement system permits issued-15</i>	<i>Scavengers registered- 15</i>
<i>Alteration permits issued-22</i>	<i>Service providers registered-9</i>
<i>Operational permit inspections-453</i>	<i>Consultations- 1,047</i>
<i>Final Installation approvals-68</i>	<i>Field consultations-253</i>
<i>Other Inspections-129</i>	<i>Special Service Inspections-35</i>
<i>Site Reviews-29</i>	<i>Mapping-82</i>
<i>Authorization to obtain a county building permit- 52</i>	

**\*Solid Waste Programs:** provides services to protect the public from disease or injury associated with the management of solid waste within the county. Individual programs include: Garbage Trucks, Rumpke Transfer Station, Rumpke Construction and Demolition Debris Facility, Scrap Tire Regulation, Closed landfills, Composting facilities, and Illegal dumping. The Health Department works closely with the Darke County Solid Waste District and the Ohio Environmental Protection Agency in regard to these solid waste programs.

<i>Transfer Station</i>	<i>1 Licensed</i>	<i>Construction &amp; Demolition</i>	<i>1 Closed</i>
<i>Closed Landfills</i>	<i>5 Closed</i>	<i>Infectious Waste</i>	<i>15 Facilities</i>
<i>Recycling Bin</i>	<i>1 Bin</i>	<i>Compost</i>	<i>3 Facilities</i>
<i>Scrap Tire</i>	<i>1 Facility</i>	<i>Solid Waste Haulers</i>	<i>8 Companies</i>

*Inspections-229      Investigations-9      Consultations-184      Letters-116*

**\*Manufactured Home Parks:** provides services to protect the health and well being of residents of manufactured home parks so they may not experience illness or injury related to the park environment. All manufactured home parks within the county are inspected and licensed by the Health Department as in accordance with Chapter 3701-27 of the Ohio Administrative Code.

*Licenses Issued- 10    Inspections- 18    Consultations- 34*

**\*Recreational Camps:** provides services to persons utilizing recreational facilities so they are at a minimal risk of injury, disease, and vector exposure. Regulated camps are those subject to Chapter 3710-25 of the Ohio Administrative Code.

*Licenses Issued: Permanent-7      Temporary-10      Inspections- 31      Consultations- 8*

**\*Animal Bites and Rabies Control:** provides services to the residents of the Darke County community concerning animal bites. This program involves the receipt of reports of all individuals in the county bitten by animals, the quarantine of animals that have bitten

individuals, the sending of animal heads to the Ohio Department of Health Laboratory, and the reporting of positive cases to the individuals involved. This program is important in preventing the possible spread of rabies, which can be a fatal disease.

<u>Animal bites:</u>	<u>Reported</u>	<u>Submitted for testing</u>	<u>Positive</u>
Cats	20	2	0
Dogs	99	1	0
Other	2	2	0

**Residential and Commercial Plumbing:** provides services to ensure the proper installation of plumbing systems within the county. It includes the inspection and permitting of new plumbing systems and the registration of plumbers that perform work within the county.

*Permits Issued: 110*  
*Inspections: 241*  
*Consultations: 391*

*Registered Plumbers: 54*  
*Sewer-tap Inspections: 76*  
*Plan Reviews-50*

**Tattoo operations:** are licensed and inspected so ensure compliance with Chapter 3701-9 of the Ohio Administrative Code. Currently, there are two operations in the county.

**\*Food Protection & Vending:** provides services to protect the health and well being of the public and consumers from foodborne illnesses. These services include the licensing and inspecting of food service operations (FSO's) and retail food establishments (RFE's) to ensure compliance with Chapter 901:3-4 and Chapter 3717-1 of the Ohio Administrative Code, investigations of foodborne illnesses, investigations of complaints against food service operations and food establishments, and education of the public and food operators on safe food handling practices.

*Number of facilities:*

*FSO/RFE-222      Mobile Units-73      Temporary Operations-110      Vending-36*

*Inspections- 943      Consultations-268*

**\*Grade A Milk Plastic Products:** the Health Department inspects facilities that make the plastic that is a component in containers for milk products. The facilities are checked quarterly for sanitation. Currently, there is one operation.

**\*Swimming Pools:** provides services that help ensure safe, clean swimming pool facilities for the general public so they may not experience illness or injury related to the swimming pool environment. All public swimming pools subject to Chapter 3701-31 of the Ohio Administrative Code are licensed and inspected by the Health Department. Inspections are conducted each month of the operation, and parameters such as residual chlorine, pH, alkalinity, water clarity, and safety are examined.

*Licenses Issued- 16*

*Inspections- 78*

*Consultations- 47*

**Bathing Beaches:** provides services that help ensure the safety of bathing beach facilities for the general public so they may not experience illness or injury related to the bathing beach environment. Inspections include safety and bacteriological testing. Currently, there are four beaches licensed.



## **Premise Sanitation:**

**Nuisance Complaints:** provides services that will reduce public health nuisances. The Health Department will investigate signed nuisance complaints provided the following information is included: a description of the complaint, location of the complaint, the name and mailing address of the individual or group the complaint is against, and how it is health related. Incomplete complaints or complaints that are not signed or health related are not investigated.

**Healthy Homes:** is a program to provide education to help individuals improve the internal environment of their home so that it is a healthy home. When requested, the health department will conduct a healthy home inspection to help an individual identify areas within their home that can be improved. A healthy home inspection will increase the occupant's awareness of any hazards present within the home, provide the occupants with tools and resources to remove those hazards, and promote the family's health by improving the condition of the home. Education on home safety, cleanliness, maintenance, and other issues will provide you with the knowledge to make your home a place that supports wellness.

**School Building Inspections:** conducted twice a year. School buildings are checked for safety, sanitation, and play ground safety. There are 17 buildings within the county.

**Jail Inspection:** the county jail is inspected once a year to ensure it meets basic sanitation and safety standards to ensure the health and well being of the occupants.

**West Nile:** provides services responsible for the tracking of the West Nile Virus among the bird, mosquito, horse, and human population within the county. Numerous phone calls and investigations are conducted. Information is provided to the public on how to reduce their risk to the disease.

### **Premise Statistics:**

*Inspections-116      Investigations-32      Consultations-555      Letters-125*

**Smoke Free Workplace Program:** provides services to prohibit all forms of tobacco smoke in all public places and places of employment and in areas immediately adjacent to the ingress or egress of the public place or place of employment through Chapter 3794 of the Ohio Revised Code.

*Investigations- 14*

*Consultations- 5*

*Letter sent- 27*

### **Additional Duties Include**

- Serving on the C.H.I.P. & C.H.I.S. Housing Advisory Committee (HAC) and the Darke County Metropolitan Housing Authority Continuum of Care
- Issuing orders for the correction of violations of regulations.
- Attending meetings and seminars sponsored by the Ohio Department of Health, the Ohio Department of Agriculture, the Ohio Environmental Protection Agency, and other entities for updates on new regulations and for acquiring education to maintain the required Sanitarian Registration and emergency response/ preparedness skills.
- Maintaining office records and reports.
- Holding public meetings and publishing news articles to inform the public of specific problems or programs.

- Collaborating with the Ohio Department of Health in the investigation of sources of physician verified lead poisoning in the children of Darke County.
- Collaborating with other governmental agencies

**Other important accomplishments in 2012**

- Developed 5 year plan for Operational & Maintenance program.
- Added additional homes to the Sewage Operational & Maintenance Program:  
1573 homes in the program
- Continued scanning and indexing Environmental Records into the electronic filing system: York, Wayne, and part of Washington Township complete.
- Developed Healthy Homes Program.
- Revamped and brought back the newsletter

***DARKE COUNTY GENERAL HEALTH FINANCIAL REPORT***

Jody Hocker manages the finances and accounting. She prepares vouchers, payroll, yearly reports, and data entry of all the various financial funds within the Health Department. Jody also provides secretarial support to other divisions as needed. Financial reports for the entire department and for individual programs are included as follows:

***2012 DARKE COUNTY GENERAL HEALTH FINANCIAL REPORT***

BALANCE - JANUARY 1, 2012	\$ 175,977.58
INCOME -	
Receipts and Other *	266,307.85
Townships (From taxation)	175,461.00
Villages (From taxation)	55,950.00
Greenville City	115,705.50
State Subsidy	<u>10,711.39</u>
	TOTAL INCOME \$800,113.32
EXPENSES -	
Salaries	398,247.66
Supplies	5,185.17
Equipment	00.00
Contract Service	9,590.50
Travel	1,003.53
Mileage	5,921.10
Advertising	515.00
Public Employees Retirement	55,768.70
Workmen's Compensation	5,646.77
Ben Admin Fee	1,087.22
Life Insurance	409.50
Other Expenses	2,810.15
Hospital Insurance	59,253.22
Medicare Fringe	4,139.67
Postage	814.30
Telephones	7,879.68
Medical Supplies	40,965.07
Remit to state – Vital Statistics	41,336.04
Other Utilities	715.52
Membership & Dues	1,675.00

Equipment 300-1000	00.00
Liability Insurance	3,982.00
Unemployment Comp	00.00
Audit	00.00
Machinery & Equipment maintenance	3,593.00
Vehicle Fuel	503.52
Vehicle Maintenance	35.96
Property Insurance	174.35
Board Member Reimbursement	4,960.00
Training	2,096.54
Prior Year Refund	406.00
Advance Out	<u>8,000.00</u>
TOTAL EXPENSE	\$666,715.17

BALANCE - DECEMBER 31, 2012 \$133,398.15

\*Receipts - Plumber Registration, Plumbing Permits, Special Services, Swimming Pool License, Vital Statistics, BCMH, Other.

### ***2012 FOOD SERVICE FINANCIAL REPORT***

BALANCE - JANUARY 1, 2012 \$ 55,918.72

INCOME -

Receipts 109,267.27

TOTAL INCOME \$165,185.99

EXPENSES -

Salaries	87,642.65
Remit to State	8,056.00
Other	1,099.66
Travel	358.64
Training	330.00
Mileage	2,448.90
Public Employees Retirement System	12,331.00
Medicare Fringe	1,261.82
Workmen's Compensation	1,147.34
Hospital Insurance	10,120.07
Life Insurance	74.10
Supplies	2,265.60
Postage	582.00
Advertisement	00.00
Equipment \$300-\$1000	00.00
Mach/Equipment	2,114.00
Vehicle Fuel	559.12
Vehicle Maintenance	60.84
Property Insurance	174.35
Advance Out	<u>00.00</u>

TOTAL EXPENSE \$130,626.09

BALANCE - DECEMBER 31, 2012 \$ 34,559.90

**PRIVATE WATER SYSTEMS FINANCIAL REPORT**

BALANCE - JANUARY 1, 2012		\$ 20,398.85
INCOME -		
Receipts		<u>42,674.60</u>
	TOTAL INCOME	\$ 63,073.45
EXPENSES -		
Remit to State - New Wells		6,974.00
Remit to State - Lab Fees		6,083.90
Salaries		22,550.53
Hospital Insurance		3,255.20
Life Insurance		23.40
Other Expenses		484.25
Public Employees Retirement System		3,157.06
Medicare Fringe		322.28
Workmen's Compensation		234.70
Supplies		622.23
Advertisement		00.00
Postage		415.00
Mileage		1,401.30
Travel		00.00
Training		<u>170.00</u>
	TOTAL EXPENSE	\$ 45,693.85
BALANCE - DECEMBER 31, 2012		\$17,379.60

**2012 TRAILER COURT/CAMP FINANCIAL REPORT**

BALANCE - JANUARY 1, 2012		\$23,384.42
INCOME -		
Receipts		<u>3,031.28</u>
	TOTAL INCOME	\$ 26,415.70
EXPENSES -		
Remit to State		1,912.00
Salaries		17,160.48
Public Employees Retirement System		2,402.49
Medicare Fringe		246.47
Hospital Insurance		1,728.23
Life Insurance		11.70
Other Expense		165.25
Travel		00.00
Mileage		792.00
Workman's Compensation		83.37
Mach/Equipment		00.00
Supplies		275.38
Postage		<u>90.00</u>
	TOTAL EXPENSE	\$ 24,867.37
BALANCE - DECEMBER 31, 2012		\$ 1,548.33



**2012 SOLID WASTE FINANCIAL REPORT**

BALANCE – JANUARY 1, 2012		\$86,285.15
INCOME –		
Receipts		<u>1,065.04</u>
	TOTAL INCOME	\$87,350.19
EXPENSES –		
Salaries		18,948.05
Public Employees Retirement System		2,647.53
Hospital Insurance		00.00
Workman’s Compensation		328.94
Medicare Fringe		274.75
Travel		00.00
Mileage		1,035.00
Other		137.25
Supplies		21.87
Postage		<u>90.00</u>
	TOTAL EXPENSE	\$23,483.39
BALANCE – DECEMBER 31, 2012		\$63,866.80

**2012 SWIMMING POOL FINANCIAL REPORT**

BALANCE - JANUARY 1, 2012		\$4,589.65
INCOME -		
Receipts		<u>5,629.28</u>
	TOTAL INCOME	\$10,218.93
EXPENSES -		
Salaries		5,017.60
Remit to State		1,075.00
Other Expense		30.50
Public Employees Retirement System		702.46
Hospital Insurance		00.00
Life Insurance		00.00
Workman’s Compensation		83.37
Medicare Fringe		72.76
Supplies		44.80
Mileage		160.20
Travel		<u>00.00</u>
	TOTAL EXPENSE	\$ 7,186.69
BALANCE - DECEMBER 31, 2012		\$ 3,032.24

**2012 IMMUNIZATION ACTION PROGRAM**

BALANCE – JANUARY 1, 2012		\$ 2,312.18
INCOME -		<u>17,850.97</u>
	TOTAL	\$20,163.15
EXPENSES -		
Salaries		12,865.50
Public Employees Retirement System		1,667.72
Medicare Fringe		186.63
Workman's Compensation		209.92
Travel		30.73
Supplies		293.87
Equipment		00.00
Advertising		550.00
Postage		286.61
Hospital Insurance		00.00
Life Insurance		00.00
Other		<u>00.00</u>
	TOTAL EXPENSE	\$16,090.98
BALANCE – DECEMBER 31, 2012		\$4,072.17

**2012 HELP ME GROW**

BALANCE – JANUARY 1, 2012		\$ 42,716.93
INCOME -		<u>170,707.05</u>
	TOTAL INCOME	\$213,423.98
EXPENSES -		
Salaries		122,117.40
Supplies		975.58
Travel		150.18
Training		991.96
Mileage		5,566.95
Other Expense		979.25
Public Employees Retirement System		17,009.35
Medicare Fringe		1,719.12
Hospital Insurance		15,966.55
Life Insurance		97.50
Postage		291.40
Advertising		162.50
Workmen's Compensation		2,067.11
Unemployment		00.00
Parent Stipend		00.00
Non Grant Donations – Cribs		287.36
Infant Visitation		182.81
Advance Out		<u>00.00</u>
	TOTAL EXPENSE	\$168,565.02
BALANCE – DECEMBER 31, 2012		\$ 44,858.96

**2012 PUBLIC HEALTH EMERGENCY PREPARDNESS**

BALANCE – JANUARY 1, 2012		\$ 63,117.81
INCOME -		<u>83,850.59</u>
	TOTAL INCOME	\$146,968.40
EXPENSES -		
Salaries		\$51,725.60
Medicare Fringe		679.12
Public Employees Retirement System		7,259.43
Hospital Insurance		6,131.25
Life Insurance		46.80
Equipment		16,086.92
Equipment 300>1000		00.00
Other		1,745.00
Mileage		813.45
Telephone		1,841.85
Postage		93.00
Contract		3,372.00
Supplies		1,069.75
Training		2,275.19
Advance		00.00
Workmen's Compensation		<u>1,137.79</u>
	TOTAL EXPENSE	\$94,277.15
BALANCE – DECEMBER 31, 2012		\$52,691.25

**2012 PUBLIC HEALTH EMERGENCY RESPONSE**

BALANCE – JANUARY 1, 2012		\$ 10.01
INCOME -		
Receipts		<u>00.00</u>
	TOTAL INCOME	\$ 10.01
EXPENSES -		
Salaries		00.00
Medicare Fringe		00.00
Public Employees Retirement		00.00
Supplies		00.00
Travel		00.00
Training/Ed		00.00
Mileage		00.00
Misc. Equip		00.00
Other Expense		00.00
Mach/Equipment		00.00
Contract Services		00.00
Worker's Compensation		10.01
Other Utilities		00.00
Advance Out		<u>00.00</u>
	TOTAL EXPENSE	\$10.01
BALANCE – DECEMBER 31, 2012		\$ 00.00

## 2012 SEWAGE TREATMENT SYSTEMS

BALANCE – JANUARY 1, 2012		\$32,016.76
INCOME -		
Receipts		<u>\$68,781.11</u>
	TOTAL INCOME	\$100,797.87
EXPENSES -		
Salaries		30,954.49
Medicare Fringe		448.97
Public Employees Retirement System		3,955.50
Hospital Insurance		3,562.93
Life Insurance		31.20
Workmen's Comp		452.27
Supplies		1,094.18
Travel		300.00
Advertising		70.00
Mileage		1,843.65
Postage		704.75
Other Expense		211.50
Remit to State		<u>1,075.00</u>
	TOTAL EXPENSE	\$44,704.44
BALANCE – DECEMBER 31, 2012		\$56,093.43

## 2012 MEDICAL RESERVE CORP

BALANCE – JANUARY 1, 2012		\$14,441.69
INCOME -		
Receipts		<u>\$ 5,000.00</u>
	TOTAL INCOME	\$19,441.69
EXPENSES -		
Safety/Supplies		296.52
Travel		00.00
Training		<u>2,093.13</u>
	TOTAL EXPENSE	\$ 2,389.65
BALANCE – DECEMBER 31, 2012		\$17,052.04