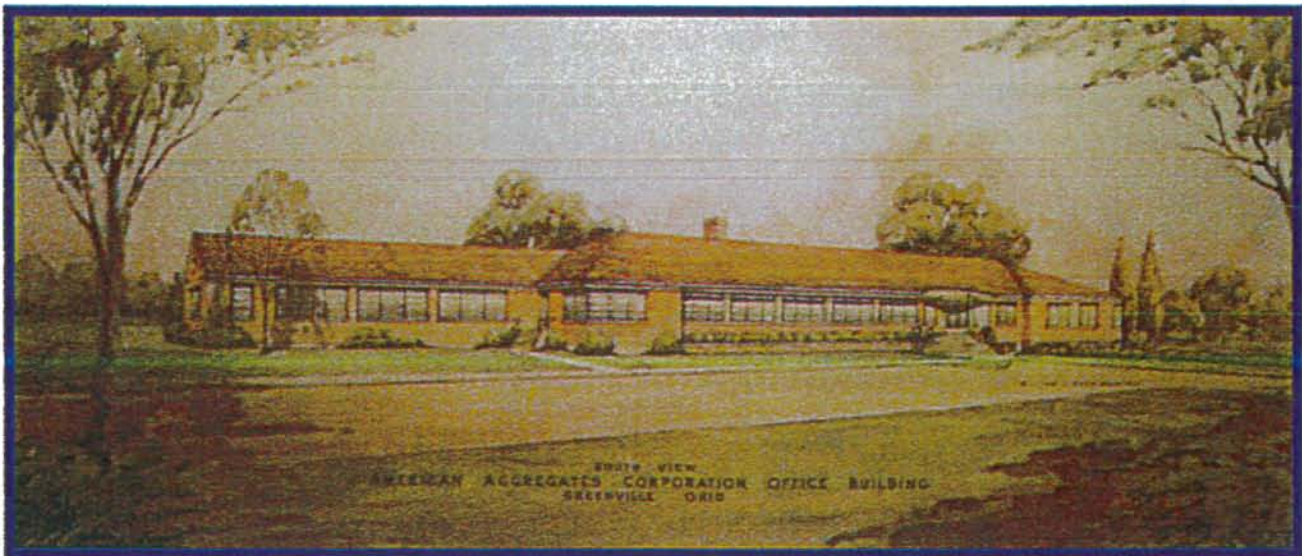


LOCAL HEALTH SERVICES

2013

Annual Report

Darke County



General Health District

T.L. Holman, DVM, RS, Health Commissioner

300 Garst Avenue • Greenville, OH 45331

Phone: 937-548-4196 • Fax: 937-548-9128

Web Site: www.darkecountyhealth.org



To: Director of Health, Ohio Department of Health
Township Trustees of Darke County
Mayors of Existing Municipalities
Greenville City Council and other Councilman
Darke County Commissioners

This 2013 annual report is just a summation of the work & the accomplishments of the Darke County General Health District staff. The success of the Darke County General Health District comes from the dedication and hard work of our staff and the Board of Health and the support of County and Township Officials. As you browse through this report we hope that you continue to be supportive of all the work that the staff and Board have accomplished. Please feel free to visit our website at: www.darkecountyhealth.org

Our goals are to insure healthy neighborhoods, workplaces and homes, safe food and water, clean air, and a healthy environment. Our commitment and efforts to provide the best health protection and quality services to the residents and environment of Darke County remains our priority.

I wish to express my gratitude to the staff for their excellent work, to the Darke County Board of Health for their interest and guidance in the community, the District Advisory Council, Greenville City, County Offices in the Courthouse, Community Partners and to the Citizens of Darke County for their continued support.

Sincerely,

T. L. Holman DVM, RS

T. L. Holman, DVM. RS
Health Commissioner

TABLE OF CONTENTS

Mission Statement

Board of Health

Advisory Council

Public Health Infrastructure Report

Community Health Nursing Services

Help Me Grow

School Health

Immunization & Communicable Diseases

Collaborations

Maternal and Child Health

Bureau for Children with Medical Handicaps

Preceptor-ships

AIDS Case Management

Community Health Assessment

Fame

Lead Program

Vital Statistics

Number of Births and Deaths

Causes of Death

Death by Age Group

Number of Permits/Certificates Issues

Environmental Services

Staff

Programs

Additional Duties

Other Accomplishments

Statistics

Financial Reports

MISSION STATEMENT

The mission of the Darke County General Health District is to develop and maintain an efficient and effective system, which will provide for the highest quality of public health services, and to promote and protect the Darke County Community's physical, mental, social, and environmental well being.

The Darke County General Health District will administer its responsibilities by:

- Assessing the health and environmental status, resources, and needs of the community.
- Develop the necessary programs to monitor and control the environmental factors that could negatively impact on the health and quality of life in the community.
- Develop the necessary programs to provide health promotion and educational services that motivate groups and individuals to improve and maintain optimal health and environmental status.
- Provide preventive health and environmental services as necessary.
- Monitor the effectiveness of the departments programs and of the community's efforts to effectively control the health and environmental problems and to maintain optimal health and environmental well being.

DARKE COUNTY GENERAL HEALTH DISTRICT BOARD OF HEALTH

The Board of Health is responsible for appointing the Health Commissioner. They approve the hiring of Health Department employees, and meet monthly to discuss topics that are occurring within the Health District. They help make important decisions such as the adoption of regulations and policies and approval of expenditures. At least one member must be a physician. The current members include:

Robert Turner, Chairman	Term Expires March 2014
James Henby, Vice-Chairman	Term Expires March 2018
Krista Fourman	Term Expires March 2017
Wayne Deschambeau	Term Expires March 2016
Dr. Margaret Hensel	Term Expires March 2015

DISTRICT ADVISORY COUNCIL

The Darke County General Health District is a combined health district representing Greenville City and the Darke County Community. There are five individuals appointed to the Board of Health. The Mayor of Greenville City appoints 2 members of the Board of Health to represent Greenville City. The District Advisory Council appoints 2 members of the Board of Health to represent Darke County and they elect a five member advisory council of regulated parties that selects an additional member from their group. The District Advisory Council includes the Township Trustees and the Mayors of the Villages within Darke County. The District Advisory Council includes Trustees from the following townships: Adams, Allen, Brown, Butler, Franklin,

Greenville, Harrison, Jackson, Liberty, Mississinawa, Monroe, Neave, Patterson, Richland, Twin, Van Buren, Wabash, Washington, Wayne, and York. The District Advisory Council includes Mayors from the following villages: Ansonia, Arcanum, Bradford, Burkettsville, Castine, Gettysburg, Gordon, Hollansburg, Ithaca, New Madison, New Weston, North Star, Osgood, Palestine, Pittsburg, Rossburg, Union City, Versailles, Wayne Lakes, and Yorkshire. The Council membership also includes a County Commissioner.

2013 DISTRICT ADVISORY COUNCIL

TRUSTEES

Claude Fenstermaker
Paul Mestermaker
Gregory Knick
Larry Royer
Dwight Warner
Justin Hines
Donald Drew
James Hanes
Mike Foreman
Tim Stump
Scott Sease
Bryan Clymer
Ken Bohman
Bob Wagner
Joe Rinehart
Tim Warner
Michael Stephan
Mark Cox
Michael Lawrence
Mike Mangen
Co. Comm. – Mike Stegall

MAYORS

Gerald A. Koverman
Judith F. Foureman
Dallas Weldy
Joe Stammen
Mary E. Brown
Jason D. Lance
John A. Gross
Dana Heck
David H. Peterson
Ray Sanders
Brad Birt
Cory Griesdorn
Steven Winner
David A. Brewer
Anthony Spires
Danny Howe
Scott Stahl
Jeffrey Subler
Gary Lee Young
Mark Gehle
Michael C Bowers, City

2012-2013 Public Health Emergency Preparedness (PHEP)

The Public Health Infrastructure is responsible for protecting Darke County's health and safety, providing credible information for better health decisions, and promoting good health through a network of partnerships. It is made up of the work force, information and data systems, and the state and local public health organizations across the country.

In the last 100 years, public health has increased life expectancy by 30 years through vaccinations, control of infectious disease, improved sanitation and many other activities. Today, this infrastructure lacks the capacity to respond quickly to public health threats. Whether it is the spread of the West Nile virus into new areas of the United States, an outbreak of E.coli 0157:H7, or a bioterrorism attack involving anthrax at an airport; the public health system has struggled to keep pace with these increasing demands.

The Public Health Emergency Preparedness Grant (PHEP) for Bioterrorism (previously the PHIG) completed its eleventh fiscal year in August of 2013. The grant provides funding for a wide range of public health initiatives, which are used to combat threats to public health. The grant provides the Darke County Health Department with funds to prepare for public health emergencies, which includes acts of bioterrorism. Emphasis is put on improving communication

between the Darke County Health Department and key players in our West Central Ohio (eight county) Region to develop, exercise, and implement Darke County's response plans and protocols. The program emphasizes the coordination of activities, a clear outline of responsibilities, and sharing of assets among hospitals, emergency management services, health care providers, state, local, and regional public health agencies, federal partners and others to prepare for and provide an effective response to public health emergencies. The funding also allows state and local health departments to hire and train personnel, as well as obtain equipment and other resources. The grant is categorized into target areas to improve capacity in planning. These areas include: epidemiology, laboratory, education & training, public risk communication & information dissemination, and expansion of current infrastructure, including the Health Alert Network. Some of the programs instituted allow for the following:

1. Integration of local, state, and regional public health and hospital preparedness and response capacity.
2. Initiating planning activities at the local level with a particular emphasis on creating local and regional plans that will link the efforts of hospitals, local health, physicians, nurses, emergency medical personnel and others.
3. Adding state capacity to provide critical centralized support services including laboratory analysis and development and maintenance of a statewide information technology system that will support the transmission of critical data at all times.
4. Establishing regional coordination of public health and hospital planning and response activities.
5. Creating the State Pandemic Flu Response Plan and implementing the vaccination clinics in compliance with the National Pandemic Vaccination Program.
6. Established a core group of hospital and public health personnel vaccinated against smallpox who are now ready to respond to a smallpox outbreak.

For additional information on preparedness or grant information, feel free to visit the Center for Disease Control's website at <http://www.bt.cdc.gov/>.

Dr. T.L. Holman, DVM, RS, Health Commissioner, heads the department of Emergency Preparedness for the Darke County General Health District. He is responsible for overseeing the grant and supervising the activities associated with the program.

Dennis Wein, RN, BSN, MPH is the Emergency Response Coordinator and is responsible for carrying out the activities associated with the PHEP Grant. He also is the Communicable Disease, & Tuberculosis Nurse, as well as the local Epidemiologist, which makes him responsible for investigating and reporting all mandated communicable diseases to the state of Ohio. Additionally, he is the advisor for the Darke County Unit of the Medical Reserve Corps.

Summary of the 2012-2013 Grant Year

Meetings attended by the emergency Response Coordinator and members of the Bioterrorism Preparedness Team of the Darke County Health Department:

Darke County LEPC meetings (quarterly)
Regional Epidemiology meetings (quarterly)
Medical Reserve Corps Member/Coordinator meetings (local - monthly) (regional – quarterly)
School Nurse Meetings (monthly - during academic year)
Regional Infectious Disease Surveillance Meetings (quarterly)
Regional Emergency Response Coordinator meetings (quarterly)

Regional Metropolitan Response System meetings (quarterly)
Ohio Department of Health *Investigation of Foodborne Disease Outbreaks* Training
Public Health OSU Summer Institute - Epidemiology Certification Completed
Incident Action Planning During Public Health Emergencies
Red Cross Instructor Training Certification
FEMA Course *Developing & Maintaining Local EOPs*

Training provided to the health department staff by the Bioterrorism team:

Bioterrorism Tabletop Drills & Exercises for the Health Department Staff: Regional Drill,
Local POD Training, April Tdap Clinic
Incident Command Training: ICS-100, ICS-200, NIMS-700
Monthly Staff In-Service (topics): BBP, TB In-Service, CPR, First Aid, HIPAA Law,
MARCS Radio In-Service, Planet Lead, & Healthy Homes.

**Education provided for the county/community by the Emergency Response Coordinator
/Infectious Disease Coordinator:**

Health Department Staff are 100% National Information Management System (NIMS)
Compliant
Communication/IT Exercise with all Darke County Schools
Emergency Preparedness Trainings via the MRC setting for Darke County School Nurses.
Communicable Disease Trainings provided for several Child Care Centers in Darke County

Pharmaceutical Cache: The Darke County Unified Pharmacy Plans are continually in place and updated. All area pharmacists have signed the Memorandum of Understanding. While waiting for the Strategic National Stockpile to arrive, this plan ensures that hospital pharmacies as well as other retail pharmacies in the county will have the drugs and supplies they need to adequately meet the increased demand brought about by a terrorist incident.

Ohio Disease Reporting System (ODRS): This system can be used 24 hours a day, 7 days a week, and 365 days a year (24/7/365) to report communicable diseases to the state. Our local Epidemiologist/Infectious Disease Nurse, Dennis Wein, enters all required disease data and monitors for new cases on a daily basis via this statewide system.

National Outbreak Reporting System (NORS): In 2012, the Darke County General Health District became enrolled in NORS. This enteric disease reporting system is supported by the CDC and assists in investigations of disease outbreaks.

Communications & Information Technology/Ohio Public Health Communication System (OPHCS) Alerts: This system addresses state efforts to provide information technology that will allow public health partners to exchange information and data quickly and securely. This system ensures effective communications between state and local public health agencies, hospitals, and emergency management. The health department provides 24/7/365 connectivity and communication between key players/stakeholders through cell phones, pagers, T1 continuous Internet connections, and telephone system. As of July of 2013, under the requirements of the PHEP Grant, the Darke County LHD now issues a quarterly OPHCS Alert to a select roster of LHD employees. The health department has in-house **MARCS** radios, which operates with 800-mtz capabilities.

OPHAN: As of 2011, the Darke County Health Department became connected into the Ohio Department of Health *Ohio Public Health Analysis Network*. This statewide electronic system

tracks POD sites within every Ohio county and has a GIS function to calculate various points of interest about population demographics.

The Darke County Health Department disseminates information to the public quickly through the Health Departments website at www.darkecountyhealth.org. In December of 2010, the Health Department added social media as a tool to reach the public and is now on Facebook and Twitter. The goal is to eventually coordinate these social media sites with our emergency preparedness partners to disseminate common, consistent messages in the event of an emergency.

Other: The Emergency Response Coordinator has also been actively part of the following community groups during 2013 Darke County Alzheimer's Committee, Darke County Tri-Council, Area Agency on Aging PSA-2, Darke County Red Cross Functional Needs Assessment Committee, and the Darke County Hazard Mitigation Committee.

Conclusion: A high level of dedication and cooperation between state, local public health, and hospital staff, along with many other partners made it possible to meet this level of productivity in the eleventh fiscal grant period. In the upcoming grant year, we face the challenge of integrating public health with community awareness and individual responsibility in addition to maintaining our current relationships with hospitals, local health departments, pharmacists, and mass clinic sights. We plan to continue preparing to protect the citizens of Darke County during any public health emergency, including those resulting from an act of terrorism. We will build on the work we have begun in the previous years as well as implement new activities that bring us closer to a better-prepared Darke County, Ohio.

Community Health Nursing Services

The Community Health Nursing Services Division (CHND) of the Darke County Health Department provides public health services and educational programming for the citizens of Darke County. Jennifer Barga RN, BSN is the Help Me Grow Project Director and the Director of the Community Health Nursing Services. She is responsible for all nursing activities. Dennis Wein, RN, BSN, MPH is the Emergency Response Coordinator, Infection Control Coordinator, and Tuberculosis Control Nurse, & Epidemiologist. Nicole Lefeld, RN is the Coordinator for the Bureau for Children with Medical Handicaps and Help Me Grow Service Coordinator, Sue Rismiller, RN is the Immunization Project Nurse. Kari Shuttleworth, RN is a HMG Service Coordinator, Nurse for the Bureau for children with Medical Handicaps, and a Newborn Home Visitor. Lisa Rodeheffer, LSW is a Help Me Grow Service Coordinator, Bev Born RN, is a nurse for the Bureau for Children, and Ann Glidewell RN, is an Immunization Program nurse. Michelle Mader is the Nursing Division Secretary who supports all of the above programming. Marilyn Holman Administrative Assistant and Jody Hocker, Account Clerk III, Administrative Assistant 1, also provide secretarial support to the nursing division as needed.

The CHNS of the Darke County Health Department meets the communities health needs with various programs. These are as follows:

The Darke County Health Department in collaboration with Anthony Wayne Early Childhood, has implemented "**Help Me Grow Early Intervention**" a comprehensive service program for Darke County pregnant women and children from birth to 3 years of age. The goal of Help Me Grow is to assure that newborns, infants, and toddlers across Darke County have the best possible start in life. Through this state integrated program, funding is provided from the state general revenue funds and federal part C dollars to provide the following services:

- Provide home visits to assess the health of newborns and to help new parents by providing information on child development and community programs and resources;
- Provide early identification of children with developmental delays and information through screenings and evaluations.
- Promote family literacy and support parents as full partners in their child's education.

Home Visiting

Ongoing services are provided to support a teen, first time expectant parent, children identified through children's protective services, or any first time parent with risk factors whose baby is less than 6 months of age.

Early Intervention

The Early Intervention program is a system of providers who work together to provide early identification and family-centered services to infants and toddlers with developmental delays or disabilities. The Early Intervention program also ensures children receive appropriate medical care and therapies, encourages parents to utilize community resources and services, and assists them with understanding the present and future needs of their children.

After the initial screening, if services are indicated referrals are made to Anthony Wayne Early Childhood. To schedule an appointment for a home visit or to ask questions about infant or toddler health, the dedicated phone line for "Help Me Grow" is **547-9392**. This is a 24-hour phone number, answered Monday through Friday between 8:00 am and 4:00 pm. A message may be left on the answering machine after hours.

Statistics for January to December 2013

Home Visits

Home Visiting	123
Early Intervention	743
Prenatal	53

School Health

All Darke County school nurses and the health department infectious disease nurse meet monthly throughout the academic year at the Health Department to discuss school child health issues. These meetings provide in-services on issues pertinent to children from kindergarten through high school. The health department supports the Darke County School Nurses in their efforts to: implement the mandated health screening programs, manage the school's medication administration program, prevent the spread of communicable disease by assuring immunization law compliance of all students, provide care for the school district's ill and injured students, coordination of health service and education efforts with teachers, athletic directors, health educators, food service personnel, and collaboration with the community health care providers.

Immunization & Communicable Diseases

The immunization program continues to serve a large portion of the Darke County population. Clinics are held on Tuesdays from 8-10:30 am and 2-5:00 p.m. The CHNS Division continues to encourage all parents to have their children fully immunized by two years of age. Immunization statistics vary for specific vaccines from year to year due to the rapidly changing immunization combinations, introduction of new vaccines, and immunization practice changes.

Immunization summary

DtaP	88	Kinrix	145	Yellow Fever	12
Tdap	536	Polio	44	Typhoid	12
MMR I	73	Td	25	Twinrix	30
MMR II	169	Rotavirus	53	MMR adult	19
Menactra	89	Hep B child	24	Hib	238
Hep B adult	101	Hep A child	204	TB tests	595
Hep A adult	35	Gardasil	80	Varicella Adult	29
Varicella Child	262	Pneumovax	12	Zostavax	62
Prevnar	245	Flu	1375	Pediarix	185

Total Vaccines- (excluding flu) 3344

Clinic Attendance (Excluding flu clinics) 2136

Total Clinics held

Days-51

Evenings- 49

Communicable Disease Report

Class A & B Diseases:	Campylobacteriosis	22	Lyme Disease	2
	Chlamydia	146	Meningitis, aseptic/viral	2
	Coccidioidomycosis	1	Meningitis - bacterial	1
	Cryptosporidium	15	Meningococcal Disease – Neisseria Meningitidis	1
	E.coli – enterohemorrhagic (Not 0157:H7)	7	Mycobacterium, non-TB	1
	Giardiasis	1	Pertussis	4
	Gonococcal Infection	22	Salmonellosis	9
	Haemophilus Influenzae	1	Streptococcal – Group A	1
	Hepatitis B, acute	4	Streptococcal pneumoniae	4
	Hepatitis B, chronic	3	Tuberculosis	2
	Hepatitis C, chronic	32	Varicella	9
	Influenza A & B (hospitalized)	22	Yersiniosis	1
Total Class Cases: 313				

Collaborations

During 2013, the CHNS Division participated in collaborative efforts throughout the community to promote the health of Darke County residents. Nurses served on the following committees:

Darke County Mental Health	County's School Nurses
Intersystem Diversion Family Team	Darke County Red Cross
Early Childhood Coordinating Committee	FAME (Financial Assistance & Medical Emergencies)
Miami Valley Health Improvement Council	Local Nursing Home meetings
Family and Children First Initiative	CORSP
Domestic Violence Coalition	
Darke County Tri Council	

Maternal & Child Health

In 2011, the Darke County Health Department participated with Ohio Department of Health's annual inspection of Wayne Hospital's Obstetrical Unit. The Obstetrical Unit was found to be in compliance and the unit was licensed for 2011-2013.

Visits were made by referral for children considered high risk for health problems, abuse, and/or neglect. The Health Department continued to cooperate with the Children's Service Division of the Job and Family Services for consultation and joint visits. Active participation in the

Intersystem Diversion Team (IDT) and Family Team Meetings involved attending case conferences for high-risk children and their parents.

Bureau for Children with Medical Handicaps

The Bureau for Children with Medical Handicaps (BCMh) is funded from the combined resources of federal, state, and county governments. Services are available to residents of Ohio, under the age of 21, who are under the care of, or referred to, a BCMh provider physician. BCMh will cover all costs to the family during the testing (diagnostic program) of a child for a medical condition through BCMh providers regardless of family income. Once diagnosed, BCMh will pay for all medical expenses (treatment program) not covered by insurance or Medicaid if the family qualifies.

Total active clients	207
Total unduplicated contacts	190
New Referrals	29

Programs:	Treatment	167
	Diagnostic	40

Preceptor-ships

Edison State Community College Nursing Students, Wright State University, Indiana University and Ball State University utilized the Darke County Health Department as a clinical site for maternal child health nursing and community health assessment.

AIDS Case Management

The CHNS Division in collaboration with the Ohio Department of Health HIV CARE Services Section and the Miami Valley Ryan White Consortium # 4 provide services to those requesting testing for HIV as well as those who are HIV positive and require case management. This consortium provides education within the community on AIDS prevention and understanding about the disease process. There were 10 clients served in Darke County for 2013. This represents 1.2% of the 815 clients enrolled in the AIDS Resource Center Ohio, which encompasses 6 counties surrounding Montgomery County. The grant which funded these

services out of the AIDS Resource Center of Dayton was greatly downsized at the end of 2011. The result of this reduction was the stoppage of testing services in Darke County in December. Services will continue to be available for Darke County residents who can travel to the Dayton office.

Financial Assistance for Medical Emergencies (F.A.M.E.)

F.A.M.E. is a local non-profit organization funded by Darke County United Way and community donations, to assist persons who need emergency medical assistance or do not qualify for any other funding source. All requests are approved by the Nursing Staff on a rotating basis. F.A.M.E. responsibilities are shared with Family Health Social Services.

**FAME
Darke County Health Department - 2013**

Month	Unfunded	Funded	Average/Patient	Total Patients	New FAME	Repeat Patients	Encounters	Denied
January	\$57.12	\$1,005.35	\$88.54	12	9	3	22	13
February	\$50.00	\$115.08	\$41.27	4	3	1	14	9
March	\$0.00	\$574.42	\$114.89	5	4	1	15	5
April	\$0.00	\$770.79	\$55.05	14	10	4	25	9
May	\$0.00	\$394.62	\$56.37	7	4	3	19	12
June	\$50.00	\$871.08	\$96.79	9	6	3	14	4
July	\$20.00	\$597.06	\$66.34	9	7	2	14	8
August	\$40.00	\$939.91	\$139.99	7	6	1	19	10
September	\$94.00	\$247.90	\$48.84	7	6	1	11	10
October	\$102.96	\$809.71	\$65.19	14	9	5	21	11
November	\$0.00	\$512.82	\$64.11	8	4	4	11	12
December	\$0.00	\$74.62	\$37.31	2	1	1	2	7
Total	\$414.08	\$6,913.36	\$874.69	98	69	29	187	110

Lead Program

Lead poisoning is the most common and preventable environmental disease affecting one out of every six preschool children. The State of Ohio mandates testing of the at risk population and requires the property be made safe. (Substitute House Bill 248)

2013 VITAL STATISTICS REPORT

Registrar: Terrence L. Holman, DVM

Deputy Registrar: Connie Shiverdecker

The Darke County Health Department Division of Vital Statistics records birth and death certificates for individuals who were either born or died in Darke County. The Birth and Death Records begin December 20, 1908 to the present date. The vital statistic office collects and reports statistics for the county. This information is used to determine trends in causes of death, health assessment, receiving funding in various forms, and genealogical purposes.

The Vital Statistics division and the Ohio Department of Health have implemented the Integrated Perinatal Health Information System and Electronic Death Registration System that allows birth and death certificates to be filed electronically.

Anyone wishing to deliver their baby at home must contact the vital statistics department and complete the proper forms to register their child.

The division also maintains Certificates of Service for people who have died in another state but are buried in Darke County.

The Darke County Health Department is now approved to issue birth certificates for individuals born in the state of Ohio. In the past, the customer had to go to the county in which the birth occurred.

BIRTH AND DEATH STATISTICS

BIRTHS	323	MALE	155	FEMALE	166
DEATHS	523	MALE	265	FEMALE	258
STILLBIRTHS	0	SETS OF TWINS	0	HOME BIRTHS	14

CAUSE OF DEATHS

Infectious & Parasitic Disease	8	Disease of the Genitourinary System	15
Disease of Immunity Disorder	11	Auto Accident	10
Neoplasm	195	Suicide	2
Disease of the Circulatory System	81	Disease of the Respiratory System	45
Other Causes of Death	99	Disease of the Nervous System & Sense Organs	30
Disease of the Digestive System	18	Other Accidents	6
Mental Disorders	5	Homicide Pending	0

DEATH BY AGE GROUP

Under 1 Year	3	25 – 44 Years	17
1 – 4 Years	1	45 – 64 Years	71
5 – 14 Years	1	65+ Years	419
15 – 24 Years	0		
Number of Burial Permits Issued (Local & Out of County)			467
Number of Affidavits Filed		(Birth) 3 (Death) 22	25
Number of Certificates of Service Filed			8
Number of Stillbirth Certificates Filed			0
Number of Certified Copies – Birth Certificates			2629
Number of Certified Copies – Death Certificates			1790

Environmental Services

The Environmental Division of the Darke County Health Department is responsible for many programs. The department aims to provide services that will protect the environment and improve the environmental factors that affect the health of the citizens of the Darke County Community. In 2013, the Environmental Division continued to be successful in keeping its state mandated programs on the state approved list.

Environmental Staff

Roberta Mangen, RS, MPH, Director of Environmental Health
Marilyn T. Holman – Administrative Assistant
Elizabeth Farver, RS, MS, GISP – Registered Sanitarian
Corrie Holthaus, RS- Registered Sanitarian
Sophie O'Connor, RS – Registered Sanitarian
Janel Hodges, RS – Registered Sanitarian
Joe Nugent, CPI-Certified Plumbing Inspector
Bill Brown, CPI – Certified Plumbing Inspector
Connie Shiverdecker – Deputy Registrar
Teresa Plessinger – Environmental Secretary

*Marked below with an asterisk are those programs, which were surveyed and approved by the Ohio Department of Health, the Ohio Department of Agriculture, and/or the Ohio Environmental Protection Agency.

Environmental Programs:

***Private Water Systems:** provides services to protect the health and well being of individuals from consuming unsafe water and to protect the ground water supply. This program includes the permitting of wells drilled either for agriculture or for a residence. The well must meet certain distance requirements and installation requirements in order to protect the ground water and ensure a safe drinking water supply. This program includes the GPS mapping of existing and new well installations.

New Installation Permits Issued- 59 Alteration Permits Issued- 17 Sealing Permits-3

Inspections- 147 Consultations-101

Water Testing: provides water testing services to protect the health and well being of individuals from consuming unsafe water. It may include testing the water to see if it is the source of illness, a cause of concern, or in conjunction with the special service sewage program, human service daycare program, food service, or the well permit program. When contaminants are found, it includes the investigation of the well, possible upgrade of the water system, and/ or education materials provided to the users of the water system.

*Satisfactory Bacteria- 203
Other samples-24*

*Un-safe Bacteria- 41
Un-safe E-coli-2*

***Home Sewage Treatment Systems:** provides services to protect the community and the environment from disease or nuisances resulting from improper or inadequately treated sewage. This program includes the permitting and inspection of all new home sewage treatment systems prior to operation, the investigation of reported malfunctioning septic systems and their subsequent repair or upgrade, the keeping of records regarding the septic systems, the GPS

mapping of septic systems, the registration of septic system installers, haulers, and service providers. The program provides educational materials to the public on their systems and how to properly maintain them.

***Sewage Operational & Maintenance Program:** This program includes the operational permitting and inspection of existing sewage systems. It ensures the systems are working in accordance with their permits and provides information to the homeowner on how to maintain their system. The information gathered helps determine what system types should or should not be installed in Darke County: what works in the county from what does not and how new systems should be installed to prevent future failure.

Special Service Sewage & Well Inspections: provides services to homeowners when selling/purchasing a home or subdividing acreage from a home to ensure the septic systems are functioning and treating the septic waste, and there is adequate room for replacement of the septic system. It also helps to ensure a water supply that meets water quality standards for the residents of the property.

***Site Review:** The Health Department reviews applications for building homes on parcels of land. Lots are reviewed for septic system and well placement. This review helps address potential problems with proposed building sites.

Subdivision & Plat Review: as part of the Review Board, the Health Department reviews those parcels of land to be split that are 20 acres or less. The Health Department along with other agencies addresses potential concerns with proposed building sites before they become a problem. They also review existing home sites that are to be sub-divided from larger parcels of land to ensure that the septic system is approved and there is adequate room for septic system replacement.

Home Sewage Treatment System Statistics:

<i>New Installation permits issued- 21</i>	<i>Installers registered-35</i>
<i>Replacement system permits issued-31</i>	<i>Scavengers registered- 13</i>
<i>Alteration permits issued-97</i>	<i>Service providers registered-9</i>
<i>Operational permit inspections-309</i>	<i>Consultations- 1,857</i>
<i>Final Installation approvals-107</i>	<i>Field consultations-213</i>
<i>Other Inspections-117</i>	<i>Special Service Inspections-59</i>
<i>Site inspections-142</i>	
<i>Authorization to obtain a county building permit- 31</i>	

***Solid Waste Programs:** provides services to protect the public from disease or injury associated with the management of solid waste within the county. Individual programs include: Garbage Trucks, Rumpke Transfer Station, Rumpke Construction and Demolition Debris Facility, Scrap Tire Regulation, Closed landfills, Composting facilities, and Illegal dumping. The Health Department works closely with the Darke County Solid Waste District and the Ohio Environmental Protection Agency in regard to these solid waste programs.

<i>Transfer Station</i>	<i>1 Licensed</i>	<i>Construction & Demolition</i>	<i>1 Closed</i>
<i>Closed Landfills</i>	<i>5 Closed</i>	<i>Compost</i>	<i>3 Facilities</i>
<i>Recycling Bin</i>	<i>1 Bin</i>	<i>Solid Waste Haulers</i>	<i>9 Companies</i>
<i>Scrap Tire</i>	<i>1 Facility</i>		

<i>Inspections-226</i>	<i>Investigations-7</i>	<i>Consultations-102</i>	<i>Letters-76</i>
------------------------	-------------------------	--------------------------	-------------------

***Manufactured Home Parks:** provides services to protect the health and well being of residents of manufactured home parks so they may not experience illness or injury related to the park environment. Although all manufactured home parks within the county are licensed by the Ohio Manufactured Home Park Commission, the Health Department has contracted with the Commission to inspect the parks.

Inspections- 14

Consultations- 36

***Recreational Camps:** provides services to persons utilizing recreational facilities so they are at a minimal risk of injury, disease, and vector exposure. Regulated camps are those subject to Chapter 3710-25 of the Ohio Administrative Code.

Licenses Issued: Permanent-7

Temporary-15

Inspections- 34

Consultations- 20

***Animal Bites and Rabies Control:** provides services to the residents of the Darke County community concerning animal bites. This program involves the receipt of reports of all individuals in the county bitten by animals, the quarantine of animals that have bitten individuals, the sending of animal heads to the Ohio Department of Health Laboratory, and the reporting of positive cases to the individuals involved. This program is important in preventing the possible spread of rabies, which can be a fatal disease.

<u>Animal bites:</u>	<u>Reported</u>	<u>Submitted for testing</u>	<u>Positive</u>
<i>Cats</i>	22	2	0
<i>Dogs</i>	65	2	0
<i>Other</i>	3	1	0

Residential and Commercial Plumbing: provides services to ensure the proper installation of plumbing systems within the county. It includes the inspection and permitting of new plumbing systems and the registration of plumbers that perform work within the county.

Permits Issued: 165

Inspections: 391

Consultations: 772

Registered Plumbers: 69

Appliance Installer: 4

Plan Reviews: 146

Tattoo operations: are licensed and inspected so ensure compliance with Chapter 3701-9 of the Ohio Administrative Code. In 2013, there were three operations in the county.

***Food Protection & Vending:** provides services to protect the health and well being of the public and consumers from foodborne illnesses. These services include the licensing and inspecting of food service operations (FSO's) and retail food establishments (RFE's) to ensure compliance with Chapter 901:3-4 and Chapter 3717-1 of the Ohio Administrative Code, investigations of foodborne illnesses, investigations of complaints against food service operations and food establishments, and education of the public and food operators on safe food handling practices.

Number of facilities:

FSO/RFE-225

Mobile Units-77

Temporary Operations-137

Vending-35

Inspections- 994

Consultations-257

***Grade A Milk Plastic Products:** the Health Department inspects facilities that make the plastic that is a component in containers for milk products. The facilities are checked quarterly for sanitation. Currently, there is one operation.

***Swimming Pools:** provides services that help ensure safe, clean swimming pool facilities for the general public so they may not experience illness or injury related to the swimming pool environment. All public swimming pools subject to Chapter 3701-31 of the Ohio Administrative Code are licensed and inspected by the Health Department. Inspections are conducted each month of the operation, and parameters such as residual chlorine, pH, alkalinity, water clarity, and safety are examined.

Licenses Issued- 16

Inspections- 68

Consultations- 30

Bathing Beaches: provides services that help ensure the safety of bathing beach facilities for the general public so they may not experience illness or injury related to the bathing beach environment. Inspections include safety and bacteriological testing. In 2013, there were four beaches licensed.

Premise Sanitation:

Nuisance Complaints: provides services that will reduce public health nuisances. The Health Department will investigate signed nuisance complaints provided the following information is included: a description of the complaint, location of the complaint, the name and mailing address of the individual or group the complaint is against, and how it is health related. Incomplete complaints or complaints that are not signed or health related are not investigated.

Healthy Homes: is a program to provide education to help individuals improve the internal environment of their home so that it is a healthy home. When requested, the health department will conduct a healthy home inspection to help an individual identify areas within their home that can be improved. A healthy home inspection will increase the occupant's awareness of any hazards present within the home, provide the occupants with tools and resources to remove those hazards, and promote the family's health by improving the condition of the home. Education on home safety, cleanliness, maintenance, and other issues will provide the occupant with the knowledge to make their home a place that supports wellness.

School Building Inspections: conducted twice a year. School buildings are checked for safety, sanitation, and play ground safety. There are 17 buildings within the county.

Jail Inspection: the county jail is inspected once a year to ensure it meets basic sanitation and safety standards to ensure the health and well being of the occupants.

West Nile: provides services responsible for the tracking of the West Nile Virus among the bird, mosquito, horse, and human population within the county. Numerous phone calls and investigations are conducted. Information is provided to the public on how to reduce their risk to the disease.

Premise Statistics:

Inspections-126

Consultations-421

Letters-72

Smoke Free Workplace Program: provides services to prohibit all forms of tobacco smoke in all public places and places of employment and in areas immediately adjacent to the ingress or egress of the public place or place of employment through Chapter 3794 of the Ohio Revised Code.

Investigations- 6

Consultations- 3

Letter sent- 9

Additional Duties Include

- Serving on the C.H.I.P. & C.H.I.S. Housing Advisory Committee (HAC) and the Darke County Metropolitan Housing Authority Continuum of Care
- Issuing orders for the correction of violations of regulations.
- Attending meetings and seminars sponsored by the Ohio Department of Health, the Ohio Department of Agriculture, the Ohio Environmental Protection Agency, and other entities for updates on new regulations and for acquiring education to maintain the required Sanitarian Registration and emergency response/ preparedness skills.
- Maintaining office records and reports.
- Holding public meetings and publishing news articles to inform the public of specific problems or programs.
- Collaborating with the Ohio Department of Health in the investigation of sources of physician verified lead poisoning in the children of Darke County.
- Collaborating with other governmental agencies

Other important accomplishments in 2013

- Added additional homes to the Sewage Operational & Maintenance Program (O&M).
- Adopted O&M plan for the county.
- Signed Memorandum of Understanding with the Manufactured Home Park Commission.
- Joe Nugent, plumbing inspector, passed his Certified Plumbing Inspector Exam.
- Updated homeowners on proposed sewage rule changes.
- Elizabeth Farver passed the Certified Pool Operator Exam with a 100%.
- The Health District started using pictometry aerials provided by the county.
- Rossburg Acres campground added 21 camp sites to the campground.
- Staff participated in the Gastro Gambit Exercise, flu clinic, and TDAP clinic.
- Continued scanning and indexing Environmental Records into the electronic filing system.
- Learned Ohio EPA new licensing process for solid waste facilities.
- Passed Ohio Department of Health surveys of the Campground, Swimming Pool, and Food Service Programs.
- Worked with the Ohio EPA and the Ohio Department of Health on a Cryptosporidium outbreak and successfully determined the source.

DARKE COUNTY GENERAL HEALTH FINANCIAL REPORT

Jody Hocker manages the finances and accounting. She prepares vouchers, payroll, yearly reports, and data entry of all the various financial funds within the Health Department. Jody also provides secretarial support to other divisions as needed. Financial reports for the entire department and for individual programs are included as follows:

2013 DARKE COUNTY GENERAL HEALTH FINANCIAL REPORT

BALANCE - JANUARY 1, 2013	\$ 133,398.15
INCOME -	
Receipts and Other *	454,715.58
Townships (From taxation)	185,496.00
Villages (From taxation)	49,918.00
Greenville City	117,707.00
State Subsidy	<u>9,736.02</u>
	TOTAL INCOME \$950,970.75
EXPENSES -	
Salaries	396,160.45
Supplies	5,096.77
Equipment	2,027.00
Contract Service	11,245.50
Insurance Billing Fee	2,551.50
Insurance Patient Reimbursement	344.00
Travel	786.55
Mileage	6,740.55
Advertising	463.00
Public Employees Retirement	56,852.89
Workmen's Compensation	4,582.98
Ben Admin Fee	1,030.80
Life Insurance	306.90
Other Expenses	3,126.00
Hospital Insurance	46,869.80
Medicare Fringe	4,065.03
Postage	1,432.68
Telephones	9,043.54
Medical Supplies	85,696.85
Remit to state – Vital Statistics	44,291.94
Other Utilities	750.42
Membership & Dues	1,335.00
Equipment 300-1000	00.00
Liability Insurance	4,012.00
Unemployment Comp	00.00
Audit	6,560.00
Machinery & Equipment maintenance	3,386.39
Vehicle Fuel	484.57
Vehicle Maintenance	347.80
Property Insurance	132.81
Board Member Reimbursement	5,360.00
Training	11,652.07
Prior Year Refund	00.00
Advance Out	<u>10,000.00</u>
	TOTAL EXPENSE \$726,735.79
BALANCE - DECEMBER 31, 2013	\$224,234.96

*Receipts - Plumber Registration, Plumbing Permits, Vital Statistics, BCMH, Other.

2013 FOOD SERVICE FINANCIAL REPORT

BALANCE - JANUARY 1, 2013		\$ 34,559.90
INCOME -		
Receipts		<u>102,310.05</u>
	TOTAL INCOME	\$136,869.95
EXPENSES -		
Salaries		81,458.95
Remit to State		8,050.00
Lab Fees		605.55
Other		193.00
Travel		392.58
Training		00.00
Mileage		2,461.50
Public Employees Retirement System		12,087.01
Medicare Fringe		1,162.22
Workmen's Compensation		1,038.93
Hospital Insurance		13,045.75
Life Insurance		90.00
Supplies		1,393.89
Postage		607.47
Advertisement		00.00
Equipment \$300-\$1000		629.00
Mach/Equipment		00.00
Mach/Equipment Maintenance		840.00
Contract		763.87
Vehicle Fuel		700.00
Vehicle Maintenance		195.45
Property Insurance		132.82
Advance Out		<u>00.00</u>
	TOTAL EXPENSE	\$125,847.99
BALANCE - DECEMBER 31, 2013		\$ 11,021.96

PRIVATE WATER SYSTEMS FINANCIAL REPORT

BALANCE - JANUARY 1, 2013		\$ 17,379.60
INCOME -		
Receipts		<u>39,479.64</u>
	TOTAL INCOME	\$ 56,859.24
EXPENSES -		
Remit to State - New Wells		4,416.00
Lab Fees		7,206.54
Salaries		19,991.00
Hospital Insurance		1,997.09
Life Insurance		11.70
Other Expenses		91.50
Public Employees Retirement System		2,798.75
Medicare Fringe		287.60
Workmen's Compensation		263.80
Supplies		702.05
Advertisement		00.00

Contract	112.50
Postage	412.00
Mileage	1,795.95
Revenue Refund	555.00
Travel	300.00
Training	00.00
TOTAL EXPENSE	<u>\$ 40,941.48</u>
BALANCE - DECEMBER 31, 2013	\$15,917.76

2013 TRAILER COURT/CAMP FINANCIAL REPORT

BALANCE – JANUARY 1, 2013	\$1,548.33
INCOME –	
Receipts	<u>5,354.74</u>
TOTAL INCOME	\$ 6,903.07
EXPENSES –	
Remit to State	870.00
Salaries	3,195.22
Public Employees Retirement System	447.33
Medicare Fringe	43.08
Hospital Insurance	00.00
Life Insurance	00.00
Other Expense	00.00
Travel	00.00
Mileage	00.00
Workman’s Compensation	204.82
Mach/Equipment	00.00
Supplies	00.00
Contract	90.00
Postage	46.00
TOTAL EXPENSE	<u>\$ 4,896.45</u>
BALANCE – DECEMBER 31, 2013	\$ 2,006.62

2013 SOLID WASTE FINANCIAL REPORT

BALANCE – JANUARY 1, 2013	\$63,866.80
INCOME –	
Receipts	<u>67,832.59</u>
TOTAL INCOME	\$131,699.39
EXPENSES –	
Salaries	28,812.12
Public Employees Retirement System	4,218.33
Hospital Insurance	00.00
Life	00.00
Workman’s Compensation	226.17
Medicare Fringe	417.91
Travel	00.00
Training	200.00
Contract	112.50
Mileage	1,597.95

Other	183.00
Supplies	129.53
Postage	<u>00.00</u>
TOTAL EXPENSE	\$35,897.51

BALANCE – DECEMBER 31, 2013 \$95,801.88

2013 SWIMMING POOL FINANCIAL REPORT

BALANCE - JANUARY 1, 2013	\$3,032.24
INCOME -	
Receipts	<u>6,815.56</u>
TOTAL INCOME	\$9,847.80

EXPENSES -	
Salaries	1,377.92
Remit to State	1,130.00
Other Expense	00.00
Public Employees Retirement System	192.91
Hospital Insurance	00.00
Life Insurance	00.00
Workman's Compensation	59.90
Medicare Fringe	21.43
Supplies	41.17
Contract	90.00
Mileage	00.00
Travel	<u>370.38</u>
TOTAL EXPENSE	\$ 3,283.71

BALANCE - DECEMBER 31, 2013 \$ 6,564.09

2013 IMMUNIZATION ACTION PROGRAM

BALANCE – JANUARY 1, 2013	\$ 4,072.17
INCOME -	
Receipts	<u>18,286.01</u>
TOTAL	\$22,358.18

EXPENSES -	
Salaries	10,995.20
Public Employees Retirement System	1,672.76
Medicare Fringe	159.61
Workman's Compensation	153.57
Travel	83.70
Supplies	2,009.34
Equipment	00.00
Advertising	550.00
Postage	215.81
Hospital Insurance	00.00
Life Insurance	00.00
Other	<u>00.00</u>
TOTAL EXPENSE	\$15,839.99

BALANCE – DECEMBER 31, 2013 \$6,518.19

2013 HELP ME GROW

BALANCE – JANUARY 1, 2013		\$ 44,858.96
INCOME -		
Receipts		<u>153,837.53</u>
	TOTAL INCOME	\$198,696.49
EXPENSES -		
Salaries		129,171.11
Supplies		1,357.48
Travel		34.79
Training		00.00
Mileage		3,807.00
Other Expense		884.45
Public Employees Retirement System		18,540.46
Medicare Fringe		1,804.73
Hospital Insurance		17,844.48
Life Insurance		102.00
Members/Dues		2,100.00
Postage		342.25
Advertising		460.66
Workmen's Compensation		1,392.03
Unemployment		00.00
Parent Stipend		00.00
Non Grant Donations – Cribs		41.00
Infant Visitation		2,077.08
Advance Out		<u>00.00</u>
	TOTAL EXPENSE	\$179,959.52
BALANCE – DECEMBER 31, 2013		\$ 18,736.97

2013 PUBLIC HEALTH EMERGENCY PREPARDNESS

BALANCE – JANUARY 1, 2013		\$52,691.25
INCOME -		
Receipts		<u>97,728.95</u>
	TOTAL INCOME	\$150,420.20
EXPENSES -		
Salaries		\$50,434.21
Medicare Fringe		697.64
Public Employees Retirement System		7,310.87
Hospital Insurance		6,389.79
Life Insurance		47.10
Equipment		00.00
Equipment 300>1000		00.00
Other		00.00
Mileage		895.05
Telephone		2,218.57
Postage		233.00
Contract		1,920.00
Supplies		628.87
Mach/Equip Maintenance		1,875.00

Training	138.39
Reimbursement	8,841.81
Advance	8,000.00
Transfer	50,461.95
Workmen's Compensation	<u>585.52</u>

TOTAL EXPENSE \$140,677.77

BALANCE – DECEMBER 31, 2013 \$9,742.43

2013 SEWAGE TREATMENT SYSTEMS

BALANCE – JANUARY 1, 2013 \$56,093.43

INCOME -

Receipts \$85,478.30

TOTAL INCOME \$141,571.73

EXPENSES -

Salaries	63,329.28
Medicare Fringe	912.31
Public Employees Retirement System	9,244.24
Hospital Insurance	6,255.98
Life Insurance	42.90
Workmen's Comp	369.47
Supplies	936.30
Travel	170.00
Contract	1,654.50
Mach/Equip Maintenance	1,232.00
Advertising	00.00
Mileage	2,753.10
Postage	979.10
Other Expense	231.75
Mach/Equip	3,319.00
Revenue Refund	440.00
Remit to State	<u>1,225.00</u>

TOTAL EXPENSE \$93,094.93

BALANCE – DECEMBER 31, 2013 \$48,476.80

2013 MEDICAL RESERVE CORP

BALANCE – JANUARY 1, 2013 \$17,052.04

INCOME -

Receipts \$ 00.00

TOTAL INCOME \$17,052.04

EXPENSES -

Safety/Supplies	00.00
Travel	00.00
Training	<u>659.63</u>

TOTAL EXPENSE \$ 659.63

BALANCE – DECEMBER 31, 2013 \$16,392.41